

WHAT IS A CREATHON ?



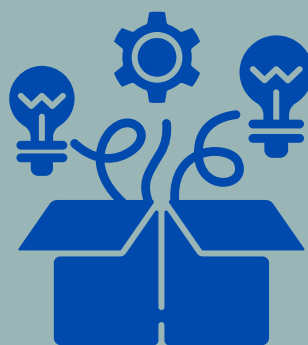
A UNIQUE BI/TRILATERAL EVENT

Organized by the French-Dutch Network, the European Metropolis of Lille, Nuffic and the Institut Français NL - our creathons are 'creative marathons' that bring together talented students and young professionals (<30) from France, the Netherlands and Belgium.



A GREAT OPPORTUNITY TO EXPAND YOUR PROFESSIONAL NETWORK

Participating in a creathon is a unique way of meeting fellow-students and colleagues from different countries and fields of study. Each creathon also features a networking evening with representatives from higher education, embassies, politics and businesses. In short, 'creathonians' have ample possibilities to broaden their horizons and expand their professional network.



THINK OUTSIDE THE BOX

Each one of our Creathons has a specific theme, but participants have a great amount of freedom. Creathonians have different cultural and scientific backgrounds and are totally free in imagining their projects. The only criteria are communicated beforehand in a 'rules®ulations'.



A COMPETITIVE, TIME-BASED CASE STUDY

A creathon is like a pressure cooker: participants form international groups and come up with a realistic project proposal in a very limited amount of time. Finances, planning, project development...everything has to be thought through two stages of two and a half days and pitched in front of a jury of experts.



THINK THE UNDOABLE AND DO THE UNTHINKABLE

Are you curious to see the results of previous creathons or are you ready to participate in the next one?

Find out more on our website nlfr.eu or contact :

- coralie.ostertag@univ-lille.fr
- mvangrunsvan@nuffic.nl



INSTITUT
FRANÇAIS NL

AMBASSADE
DE FRANCE
AUX PAYS-BAS
Liberté
Égalité
Fraternité

MEL MÉTROPOLÉ
EUROPÉENNE DE LILLE

FRNL
réseau franco | néerlandais

nuffic

Université
de Lille